



Visitor's Guide

1629 Old South 5
Camdenton, MO 65020

WELCOME!

Whether planning a trip to ITW EAE, Camdenton facility or already here, we hope you find this guide helpful.

If viewing this document electronically, please note that all underlined text contains web links for your convenience.

Be sure to let us know of any suggestions you might have to improve this guide.

Thank you for considering [ITW EAE](#).

Greg Hueste, John
Neiderman & Tad Formella
Technical Instructors
ITW EAE Educational Services

Camdenton Facilities Information!

Below is some helpful information for visitors about the policies that must be followed during their time here.

1. Safety is paramount. When working on machines in the classrooms, safety glasses must be worn. Tours of the manufacturing areas require wearing of safety glasses as well. You may bring your own or we can provide glasses.
2. Visitors badges will be issued and must be visible at all times while in the building.
3. Appropriate work clothing should be worn. (no sandals or open toed shoes)
4. Classes start on Monday morning at 9:00 AM local time. Don't be late!



Camdenton Facilities Information!

Below is some helpful information for visitors about the policies that must be followed during their time here.

As part of ITW EAE's continued efforts in creating a culture of wellness for all our employees, we have implemented a campus-wide tobacco-free policy.

Use of any tobacco products will be prohibited in all areas of the company property.



Directions from Airports to ITW EAE, Camdenton, MO.

From **Kansas City International Airport (MCI)** - Kansas City, Missouri

Via I-70 – appx. 3 hr. 20 min. drive

1. Start out going SOUTHWEST on MO-D/Loop Cookingham Dr toward International Cir. (go 0.03 miles)
2. MO-D/Loop Cookingham Dr becomes International Cir.(go 0.51 miles)
3. Stay straight to go onto MO-D/Loop Cookingham Dr. (go 1.68 miles)
4. Merge onto I-435 E toward St. Louis (go 26.5 miles)
5. Merge onto I-70 E via EXIT 63B on the left toward St. Louis (go 69.7 miles)
6. Merge onto US-65 S via EXIT 78A toward SEDALIA (go 58.0 miles)
7. Turn LEFT onto MO-7 (go 31.2 miles)
8. Turn RIGHT onto N HIGHWAY 5 / MO-5 / MO-7. Continue to follow MO-5 / MO-7 (go 9.7 miles)
9. Take the Business Route 5 / MO-7 S ramp toward RICHLAND / CAMDENTON (go 0.4 miles)
10. Turn LEFT onto S Business Route 5 (go 0.08 miles)
11. S Business Route 5 becomes Old South 5 (go 1.7 miles)
12. 1629 OLD SOUTH 5.
 - Your destination is 0.3 miles past Airport Dr
 - If you reach Hoods Blvd you've gone a little too far

Visitors' parking is the 2nd parking lot.

(NOTE: Do Not use 1629 Old South 5 on GPS. Use: 1 Hoods Blvd., Camdenton, MO)

Directions from Airports to ITW EAE, Camdenton, MO

From Kansas City International Airport (MCI) - Kansas City, Missouri via MO-7 – appx. 3 hour drive

1. Start out going SOUTHWEST on MO-D/Loop Cookingham Dr toward International Cir. (go 0.03 miles)
2. MO-D/Loop Cookingham Dr becomes International Cir.(go 0.51 miles)
3. Stay straight to go onto MO-D/Loop Cookingham Dr. (go 1.68 miles)
4. Merge onto US-71 S toward Kansas City. (go 18.26 miles)
5. Keep right to take US-71 S toward I-35 S/Wichita. (go 37.72 miles)
6. Take the MO-7 S exit, EXIT 157, toward Clinton. (go 0.23 miles)
7. Turn left onto MO-7/E 275th St. Continue to follow MO-7. go 39.14 miles)
8. Turn left onto E Ohio St/MO-7/MO-18. Continue to follow E Ohio St. (go 0.35 miles)
9. E Ohio St becomes MO-7. (go 27.86 miles)
10. Merge onto US-65 S/MO-7 toward Springfield. (go 6.45 miles)
11. Turn left onto MO-7. (go 31.13 miles)
12. Turn right onto N Highway 5/MO-5/MO-7. Continue to follow MO-5/MO-7. (go 9.69 miles)
13. Take the Business Route 5/MO-7 S ramp toward Richland/Camdenton. (go 0.4 miles)
14. Turn left onto S Business Route 5. (go 0.08 miles)
15. S Business Route 5 becomes Old South 5. (go 1.69 miles)
16. 1629 OLD SOUTH 5.
 - Your destination is 0.3 miles past Airport Dr
 - If you reach Hoods Blvd you've gone a little too far

Visitors' parking is the 2nd parking lot.

(NOTE: Do Not use 1629 Old South 5 on GPS. Use: 1 Hoods Blvd., Camdenton, MO

Directions from Airports to ITW EAE, Camdenton, MO

From **Lambert – St. Louis (STL)** – St. Louis, Missouri **via I-70**
appx. 2 hr. 54 min. drive

1. Start out going northwest on Main Terminal Departure Dr toward Lambert International Blvd. (go 0.29 miles)
2. Turn left onto Lambert International Blvd. (go 0.06 miles)
3. Take the ramp toward I-70 W/Terminal 1/Rental Car Return. (go 0.08 miles)
4. Merge onto I-70 W. (go 88.47 miles)
5. Take the US-54 exit, EXIT 148, toward Auxvasse/Mexico/Fulton. (go 0.2 miles)
6. Turn left onto US-54 W/US Highway 54. Continue to follow US-54 W. (go 87.39 miles)
7. Merge onto MO-5 S/MO-7 S (on the Right) toward Lebanon. (go 2.11 miles)
8. Take the Business Route 5/MO-7 S ramp (on the Right) toward Richland/Camdenton. (go 0.4 miles)
9. Turn left onto S Business Route 5. (go 0.08 miles)
10. S Business Route 5 becomes Old South 5. (go 1.69 miles)
11. 1629 OLD SOUTH 5.
 - Your destination is 0.3 miles past Airport Dr
 - If you reach Hoods Blvd you've gone a little too far

Visitors' parking is the 2nd parking lot.

(NOTE: Do Not use 1629 Old South 5 on GPS. Use: 1 Hoods Blvd., Camdenton, MO

Directions from Airports to ITW EAE, Camdenton, MO

From **Lambert – St. Louis (STL)** – St. Louis, Missouri **via I-44**
appx. 2 hr. 50 min. drive

1. Start out going northwest on Main Terminal Departure Dr toward Lambert International Blvd. (go 0.29 miles)
2. Turn left onto Lambert International Blvd. (go 0.06 miles)
3. Take the ramp toward I-70 W/Terminal 1/Rental Car Return. (go 0.08 miles)
4. Merge onto I-70 W / MARK TWAIN EXPY (go 3.6 miles)
5. Merge onto I-270 S via EXIT 232 B-A toward MEMPHIS (go 14.3 miles)
6. Merge onto I-44 W via EXIT 5B toward TULSA (go 125.8 miles)
7. Take the MO-7 / MO-P exit, EXIT 150, toward RICHLAND / LAQUEY (go 0.3 miles)
8. Turn RIGHT onto MO-7 / HIGHWAY 7 S (go 7.7 miles)
9. Turn LEFT onto E JEFFERSON Ave / MO-7 / MO-133 (go 1.0 miles)
10. Turn LEFT onto N PINE ST / MO-7 / MO-133 (go 0.1 miles)
11. Take the 3rd RIGHT onto W WASHINGTON AVE / MO-7. Continue to follow MO-7 (go 14.9 miles)
12. Turn LEFT onto S STATE HIGHWAY 7 / MO-7 (go 6.6 miles)
13. Turn LEFT onto OLD SOUTH 5 (go 0.7 miles)
14. 1629 OLD SOUTH 5.
 - Your destination is 0.3 miles past Airport Dr
 - If you reach Hoods Blvd you've gone a little too far

Visitors' parking is the 2nd parking lot.

(NOTE: Do Not use 1629 Old South 5 on GPS. Use: 1 Hoods Blvd., Camdenton, MO

Directions from Airports to ITW EAE, Camdenton, MO

From **Springfield-Branson National Airport (SGF)** – Springfield, Missouri
via **I-44** appx. 1 hr. 20 min. drive

1. Start out going west on N Airport Blvd. (go 0.47 miles)
2. Keep right at the fork to continue on N Airport Blvd. Pass through 1 roundabout. (go 1.62 miles)
3. Turn left onto W State Highway 266/MO-266. (go 1.14 miles)
4. Merge onto I-44 E via the ramp on the left toward Rolla. (go 56.28 miles)
5. Take the MO-5/MO-32 exit, EXIT 129, toward Lebanon/MO-64/Hartville. (go 0.17 miles)
6. Keep left to take the ramp toward Lebanon/Lake of the Ozarks/Bennett Springs State Park. (go 0.03 miles)
7. Turn left onto MO-5/MO-32/S Jefferson Ave. Continue to follow MO-5/S Jefferson Ave. (go 1.66 miles)
8. Turn right onto E 7th St/MO-5. Continue to follow MO-5. (go 21.37 miles)
9. Take the Business Route 5/MO-7 S ramp toward Richland/Camdenton. (go 0.21 miles)
10. Turn right onto Old South 5. (go 1.64 miles)
11. 1629 OLD SOUTH 5.
 - Your destination is 0.3 miles past Airport Dr
 - If you reach Hoods Blvd you've gone a little too far

Visitors' parking is the 2nd parking lot.

(NOTE: Do Not use 1629 Old South 5 on GPS. Use: 1 Hoods Blvd., Camdenton, MO

Directions from Airports to ITW EAE, Camdenton, MO

From **Columbia Regional Airport (COU)** – Columbia, Missouri
via **US-54** appx. 1 hr. 17 min. drive

1. Turn **left** toward **S. Airport Dr.** (348 ft)
2. Turn **right** onto **S. Airport Dr.** (1.0 mi)
3. Turn **left** onto **E Rte H.** (1.1 mi)
4. At the traffic circle, continue straight to stay on **E Rte H** (0.1 mi)
5. At the traffic circle, take the **3rd exit** onto the **US 63 S** ramp to **Jefferson City** (0.3 mi)
6. Continue onto **US-63 S** (17.5 mi)
7. Merge onto **US-54 W / US-63 S** via the ramp to **Jefferson City**
8. Continue to follow **US-54 W** (60.1 mi)
9. Take the **Business Route 5/MO-7 S** ramp (on the Right) toward **Richland/Camdenton.** (.04 Mi)
10. Turn **left** onto **S Business Route 5.** (.08 Mi)
11. S Business Route 5 becomes Old South 5. (1.69 Mi)
12. 1629 OLD SOUTH 5.
 - Your destination is 0.3 miles past Airport Dr.
 - If you reach Hoods Blvd you've gone a little too far

Visitors' parking is the 2nd parking lot.

(NOTE: Do Not use 1629 Old South 5 on GPS. Use: 1 Hoods Blvd., Camdenton, MO

CAMDENTON HOTELS

SLEEP INN and SUITES

1390 E. US Highway 54
Camdenton, MO 65020
Telephone 573-346-4501

<http://www.sleepinn.com/hotel-camdenton-missouri-MO158>

Located 5.4 miles from ITW EAE

Turn left onto Hwy 54 West
Take Hwy 5 / Lebanon exit on the right
Take Hwy 7 / Richland exit – turn left at
top of exit ramp.
Go appx. 1-1/2 miles we will be on the
right across from the Airport

OLD KINDERHOOK LODGE

20 Eagle Ridge Road
Camdenton, MO 65020
Telephone 573-317-3500

<http://oldkinderhook.com/thelodge.asp>

Located 9.79 miles from ITW EAE

Turn left onto Hwy 54 East
At the light, Turn right onto Business Route 5
South
Go appx. 5 miles South on Business 5
We will be on the right across from the Airport

Note: ITW EAE corporate rates may be available. Please inquire when reserving rooms.

OSAGE BEACH / LAKE OZARK HOTELS

Tan Tar A Resort

494 Tan Tar A Drive
Osage Beach, MO 65065
Telephone 866-925-7710

[Tan Tar A Resort](#)

Holiday Inn Express

4533 Osage Beach Pkwy
Osage Beach, MO 65065
866-582-9492

[Holiday Inn Express Osage
Beach](#)

Baymont Inn & Suites

5885 Highway 54
Osage Beach, MO 65065
800-337-0300

[Comfort Inn Lake Of The
Ozarks](#)

Resort at Port Arrowhead

3080 Bagnell Dam Blvd.
Lake Ozark, MO
Telephone 573-365-2334

[Resort At Port Arrowhead](#)

Note: ITW EAE corporate rates may be available. Please inquire when reserving rooms.

Some Area Restaurants

Osage Beach Restaurants —

[Vista Grande Mexican Restaurant](#)

573-348-1231

[Backwater Jacks Bar & Grill](#)

573-348-6639

[Domenico's Italian Restaurant](#)

573-348-5335

[Chili's Grill & Bar](#)

573-348-1116

[Panera Bread](#)

573-302-0024

[Michaels Steak Chalet](#)

573-348-3611

[Hideout Bar & Grill](#)

573-348-1500

[JB Hook's Ocean Fish And Steaks](#)

573-365-3255

[Bentley's Restaurant](#)

573-365-5301

[Bandana's Barbeque](#)

573-302-4500

[Applebee's](#)

573-348-9595

[Shorty Pants Lounge and Marina](#)

573-302-1745

[Wobbly Boots](#)

573-348-2277

[Touch of Asia](#)

573-302-7733

[Arris Pizza](#)

573-348-2288

[Backwater Jacks Bar & Grill](#)

573-348-6639

[Oar House Bar & Grill - Marina](#)

573-348-5268

[Dog Days Bar & Grill](#)

573-348-9797

[Outback Steakhouse](#)

573-302-3670

[Half Sauced Barbeque](#)

573-348-3200

Camdenton Restaurants —

[Golden Rock Winery](#)

573-317-9463

[The Trophy Room at Old Kinderhook](#)

573-317-3560

[Pepperoni Bill's Pizzeria](#)

573-873-2365

[El Espolon](#)

573-346-9942

[China Town](#)

573-346-4962

[El Caporal](#)

573-317-1500

[The Fish & Co. Out of Water](#)

573-317-9565

[RJ's Family Restaurant](#)

573-346-6133

[The Funky Buffalo Coffee House](#)

573-317-1900

General Information

Limo Services

Lake Area Limousine Svc.
573-302-1888
jwol776084@aol.com

Zee Lake Auto Rental
573-365-2366
dbzorma@gmail.com

Buddy's Transportation Serv.
573-365-9487
driving_buddy@hotmail.com

Shopping/Entertainment

Osage Beach Premium Outlets

4540 Osage Beach Parkway
Osage Beach, MO 65065
573-348-2065
www.premiumoutlets.com/osage

Directions from ITW EAE, Camdenton:

Turn Left out of parking lot onto NW Old South 5
Merge onto MO-5 N / MO-7 N State Hwy 5
Merge onto US-54 E toward Osage Beach
Take the Passover Road Ramp
Turn slight RIGHT onto Passover Road
Turn RIGHT onto Osage Beach Pkwy / US-54 Bus E
4540 Osage Beach Pkwy is on the RIGHT

Ha Ha Tonka State Park

1491 State Road D
Camdenton, MO 65020
573-346-2986
[Ha Ha Tonka State Park | Missouri State Parks](http://HaHaTonkaStatePark|MissouriStateParks)

Missouri Trap Shooters Association

51 Trapshooters Road
Linn Creek, MO 65052
573-346-2449
[Missouri Trap Shooters Association](http://MissouriTrapShootersAssociation)

Celebration Cruises

5076 Davis Drive
Osage Beach, MO 65065
573-480-3212
[Celebration Cruises at Lake of the Ozarks Missouri](http://CelebrationCruisesatLakeoftheOzarksMissouri)

General Information

(continued)

Shopping/Entertainment

Bridal Cave

526 Bridal Cave Rd.
Camdenton, MO 65020
573-346-2676

[Bridal Cave - Camdenton, Missouri!](#)

The Oaks Golf Course at Tan Tar A

494 Tan Tar A Drive
Osage Beach, MO 65065
573-348-8522

[The Oaks Golf Club](#)

Wehrenberg Eagles Landing 8 Cine'

1300 Barred Owl Lane
Lake Ozark, MO 65049
573-723-1397

[Eagles' Landing 8 Cine - Wehrenberg Theatres](#)

Main Street Music Hall

5845 Osage Beach Pkwy
Osage Beach, MO 65065
573-348-9500

[Main Street Music Hall Lake of the Ozarks](#)

Big Surf Water Park

954 State Road Y
Linn Creek, MO 65052
573-346-6111

[Big Surf Waterpark](#)

Paradise Parasail

1100 Bagnell Dam Blvd
Lake Ozark, MO 65049
573-365-6757

[Paradise Parasail Inc](#)

General Information

(continued)

Shopping/Entertainment

Timber Falls Indoor Water Park

494 Tan Tar A Drive
Osage Beach, MO 65065
800-826-8272

[Timber Falls Indoor Waterpark](#)

Pirate's Cove Adventure Golf (Miniature)

5058 Osage Beach Pkwy
Osage Beach, MO 65065
573-348-4599

[Pirate's Cove Adventure Golf](#)

Gran Rally Karts

5730 Osage Beach Pkwy
Osage Beach, MO 65065
573-348-4911

granrallygokarts.com

Montego Bay Marina – Boat/PWC Rentals

Lake Road 5-81 (1629 Resorts Rd.)
Camdenton, MO 65020
573-348-4911

[Montego Bay Marina](#)

Iguana Watersports – Boat/PWC Rentals

4430 Sunset Drive
Osage Beach, MO 65065
573-365-2399

[Boat Rental Lake of the Ozarks](#)

The Getaway Boat & Jet Ski Rental

1192 Lakeshore Dr.
Osage Beach, MO 65065
573-348-6677

www.getawayatthelake.com/

For more Attractions click this link:

<http://www.funlake.com/Attractions?category=Attractions&type=Recreation>

Contact Information

General

Tel: (573) 346-3341
Toll Free: (800) 737-8110
press 2, then 4
Fax: (573) 346-0002
Web: www.itweae.com

Technical Instructors

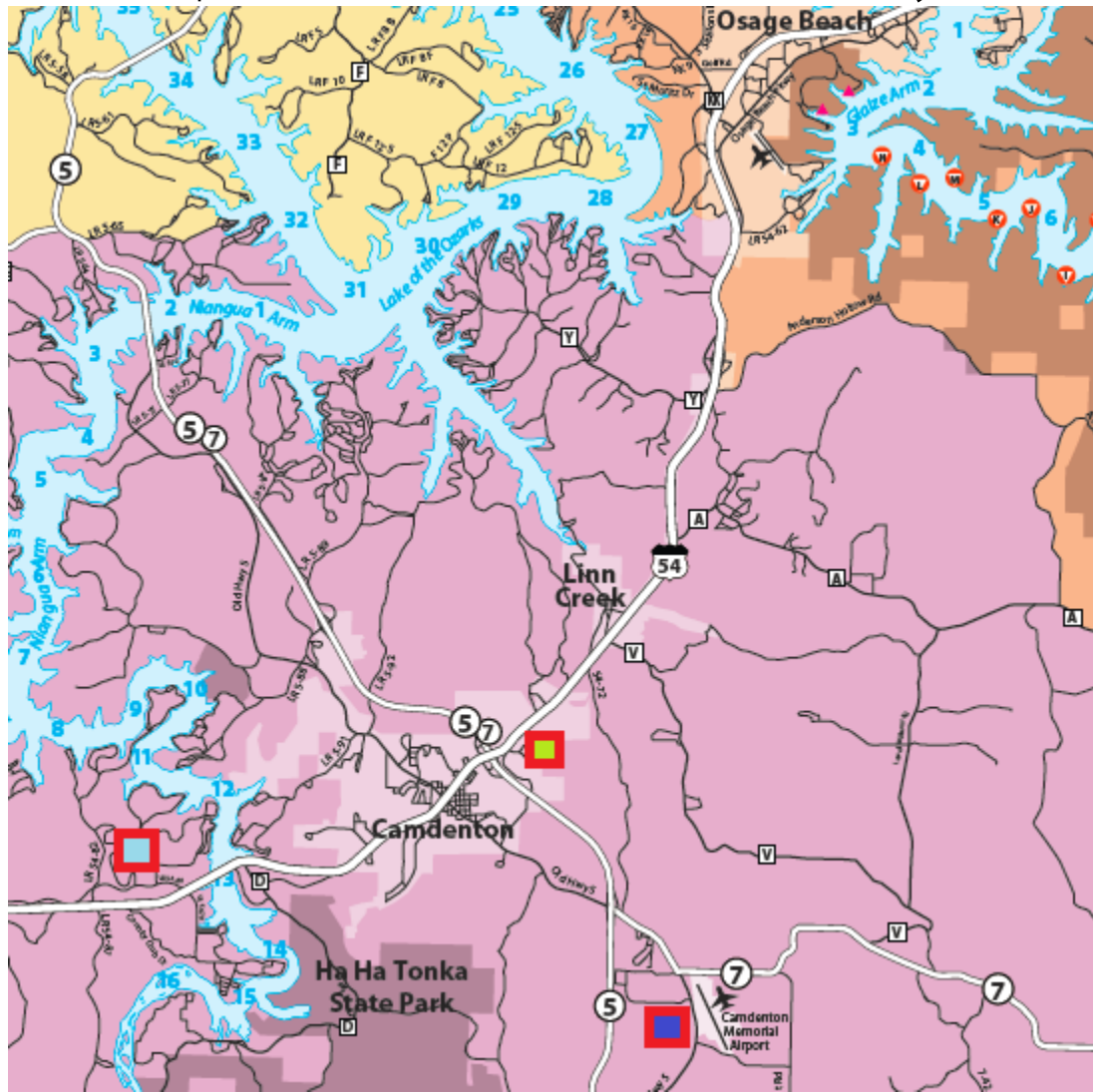
Greg Hueste
Tel: (573) 317-3041
ghueste@itweae.com

John Neiderman
Tel: (573) 317-3088
jneiderman@itweae.com

Tad Formella
Tel: (817) 312-4438
tformella@itweae.com

To Kansas City, Missouri

To Columbia/St. Louis, Missouri



-  **Electrovert Factory**
-  **Sleep Inn**
-  **Old Kinderhook**

To Lebanon/Springfield, Missouri